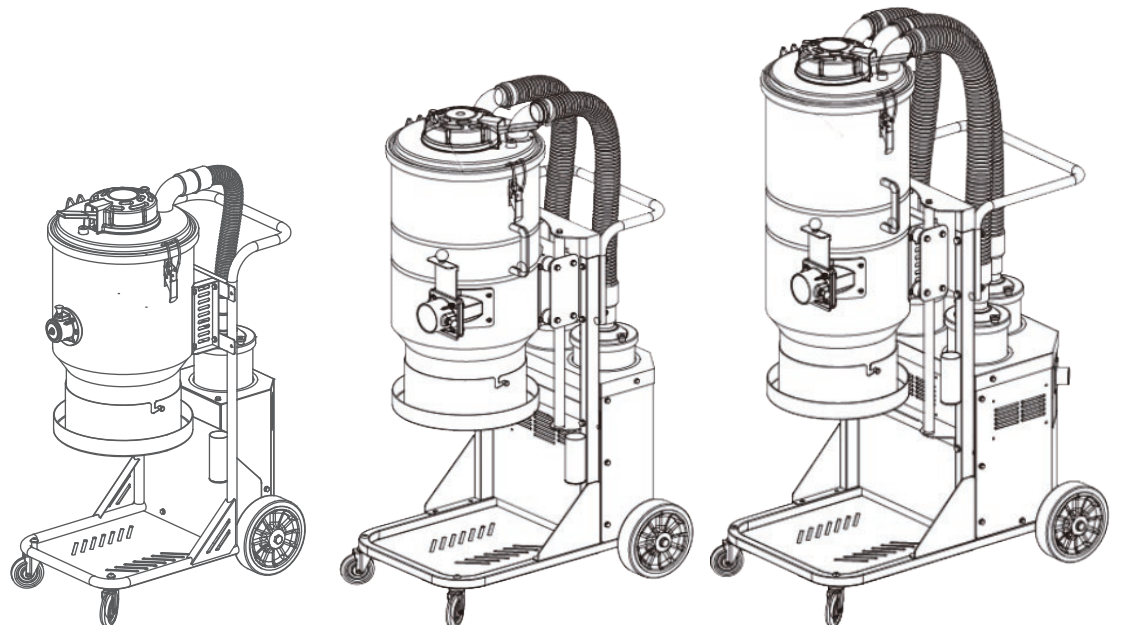




Bersi Industrial Equipment Co.,Ltd

Industrial vacuums Dust extractors



About Us

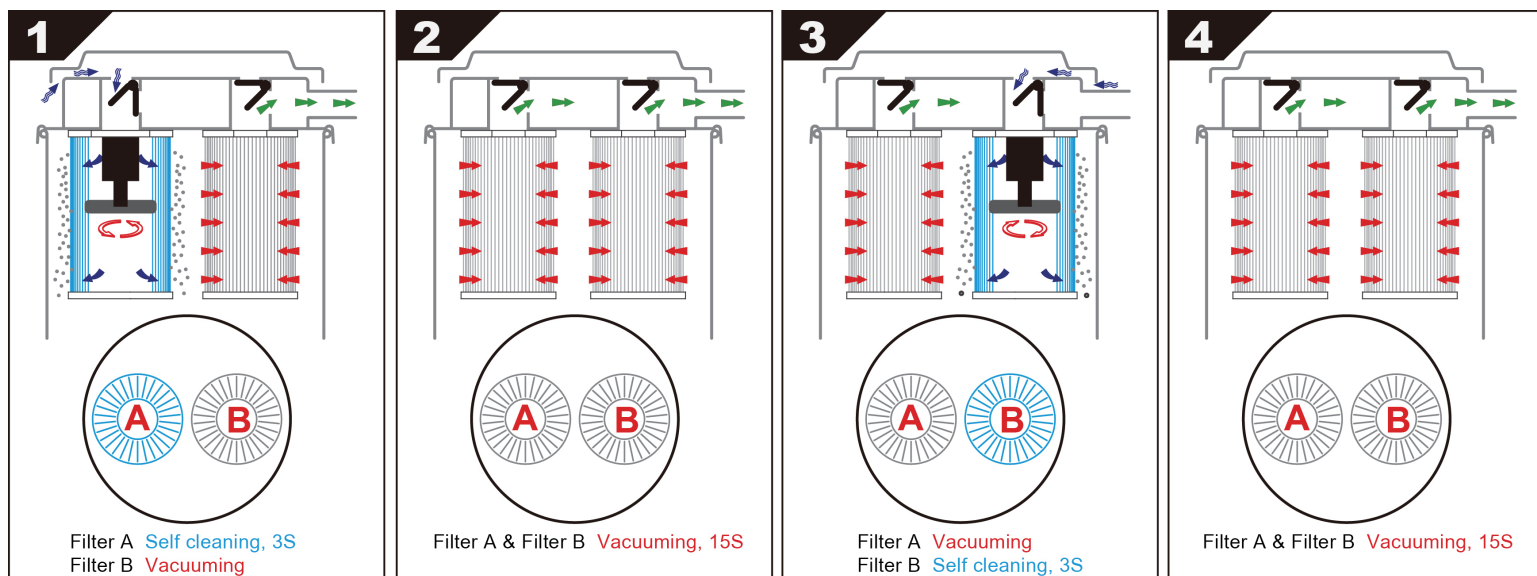
Bersi Industrial Equipment Co.,Ltd

Bersi Industrial Equipment Co.,Ltd. is a leading China manufacturer of patented industrial vacuum and dust extractor systems with innovative technology, which focus on providing the most reliable industrial vacuum cleaner on the market. Our R&D team have put lots of effort into making our industrial vacuum to be the best in durability and efficiency.

The engineers and designers are dedicated to designing&producing vacuums that meet or exceed environmental and safety standard, protect the working site to be safer and cleaner.

How does Bersi Auto pulsing vacuum work

Innovated Auto Clean System



AC150H



Main features:

1. Automatic Clean: The innovated auto clean system ensure the vacuum works at high suction all the time without clogging, provides a continuous use mode. Time and labor savings greatly.
2. Equipped with 2 HEPA filters: stops 99.95% of fine dusts at 0.3 μm .
3. Wet and dry for liquids and dry solids extraction both.
4. 38L injection molding tank provide big storage capacity.
5. Power socket for power tool use activates automatically on start/shut-down of the vacuum cleaner.
6. Suction power control for adapted suction performance.
7. Automatic trailing mechanism for emptying the suction hose completely.
8. Large and robust wheels and castors built to withstand the tough construction site.
9. Cable wrap for convenient cord storage.
10. Practical accessory case and storage area.

Model	AC150H	
Voltage	1 phase	1 phase
	220V-240V 50/60Hz	110V-120V 50/60Hz
Power	1.2 kw	1.3 kw
	1.7 HP	1.85 HP
Current	5.2 amp	10.8 amp
Water lift(max)	250 mbar	250 mbar
	104 inch	104 inch
Airflow(max)	154 cfm	153 cfm
	262 m ³ /h	260 m ³ /h
Auto clean	Yes	Yes
Filter quantity	2 pcs	2 pcs
Filter efficiency	HEPA, > 99.95% @ 0.3um	
Airflow adjustable	Yes	Yes
Power socket	10A	10A
Power tool quick start	Yes	Yes
Remote control start	Optional	Optional
Dimension	15.15*19.7*22.4 inch	
	385*500*570 mm	
Tank volume	10Gal/38L	
Weight	29lbs/13.5kg	

Auto Clean W/D HEPA Vacuum

AC150H is a one motor wet and dry class H certified dust extractor with Bersi innovated auto clean system, 38L tank volume. There are 2 filters rotate self clean to maintain high suction always. The HEPA filter captures 99.95% of particles at 0.3 microns. It is a portable and lightweight vacuum cleaner for liquids and dry fine dust both, the machine will shut down automatically when reach to the liquids maximum fill level. Ideal for power tool requires continuous working, especially suited for extracting concrete and rock dust in construction site and workshop.

Standard tools kit

 1.38" Antistatic hose, 4M	 HEPA filter, 2PCS	 1.38" plastic crevice tool, 1PC
 Handle, 1PC	 1.38" floor brush, 1PC	 Connection sleeve, 1PC
 HEPA non woven dust bag, 1PC	 1.38" wand, 2PCS	 PE disposal bag, 5PCS

AC18

One Motor Auto Clean HEPA Dust Extractor

The AC18 is a dust extractor featuring one motor design and innovated auto clean system. The 1800W single motor generates powerful suction and high air flow. It incorporates a two - stage filtration mechanism. In the first stage, two filters rotate self cleaning. The second stage utilizes a HEPA 13 filter, boasting an efficiency of > 99.99% at 0.3um. Its most remarkable feature is the auto clean technology. This function eliminates the hassle of frequent manual filter cleaning caused due to clogging, ensuring truly uninterrupted operation. The continuous folding bag system enables safe and clean dust disposal. The AC18 is an ideal choice for hand grinders, edge grinders, and other power tools.



Main features:

1. Innovated auto clean technology, ensuring the vacuum keeps strong suction all the time.
2. 2-stage filtration system, each HEPA 13 filter is individually tested and certified with EN1822-1 and IEST RP CC001.6.
3. 8" heavy duty "No marking type" rear wheels and 3" lockable front caster.
4. Continuous bagging system ensures quick and dust-free bag changes.
5. Light and portable design, easy for transportation.

Model	AC18
Power (kw)	1.8kw
Voltage	220-240V, 50/60HZ
Amps	7.5
Airflow (m³/h)	220
Vacuum (mBar)	320
Pre-filter	0.8m² > 99.95%@0.3um
Hepa filter (H13)	1.2m² > 99.99%@0.3um
Filter cleaning	Jet pulse filter cleaning
Dimension (inch)	165×268×433
Weight (lbs)	75
Collection	Continuous drop-down bag

Standard accessory	
	
1.5" brush	1.5" L wand
	
1.5" EVA hose, 5.0m	
	
1.5" soft hose cuff	1.5" solid hose cuff



Innovated auto clean



Pre filter, 2PCS



Hepa filter (H13)

2 motors Auto Pulsing HEPA dust extractor

AC21 is a twin motors Auto pulsing HEPA dust extractor .

The Bersi patent Auto pulsing technology get rid of the air compressor and manual cleaning, reliable and effective, ensuring 100% uninterrupted working. The first stage equipped with three cylindrical filters with 2.0 m² filter area in total. The second stage has 2pcs H13 HEPA filter tested and certified with EN1822-1 and IEST RP CC001.6.



Main features:

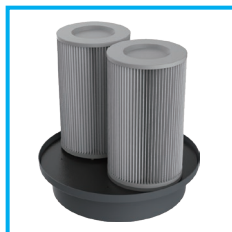
1. Two powerful Ametek motors, ideal for grinder working width below 600mm.
2. Bersi patent Auto Pulsing technology, no manual cleaning, save the labour time greatly.
3. OSHA compliant 2-stage filtration system. In the primary stage, the two cylindrical filters take turns to pulsing clean. In the second stage, 2PCS H13 HEPA filters with 99.99% @0.3µm efficiency.

Model	Unit	AC21
Voltage		110V 50/60Hz
Power	kw	2.4kw
	HP	3.4
Current	Amp	18
Water lift	Kpa	24
	inch	100
Airflow (max)	cfm	258
	m ³ /h	400
Pre-filter		2.0m ² >99.9% @0.3µm
Filter cleaning		Innovated auto clean system
Hepa filter(H13)		2.4m ² >99.99% @0.3µm
Collection		Continuous drop-down bag
Dimension	inch	22.4X28X51.2
	mm	570X710X1300
Weight	lbs	117
	kg	53

Standard accessory	
	
2" brush	2" S wand
	
2.75" / 2" reducer	
	
2" hose cuff	2" EVA double layer hose



Innovated Auto Clean System



2 pcs H11 filters rotate to function filter cleaning



Second stage 2 pcs H13 HEPA certified filters



Individual switches control the 2 motors separately



8" heavy duty non marking rear wheel

AC31/AC32

3 motors Auto Pulsing HEPA dust extractor

AC32/AC31 is a triple motors Auto pulsing HEPA dust extractor . The Bersi patent Auto pulsing technology get rid of the air compressor and manual cleaning, reliable and effective, ensuring 100% uninterrupted working. The first stage equipped with three cylindrical filters with 3.0 m² filter area in total. The second stage has 3pcs H13 HEPA filter tested and certified with EN1822-1 and IEST RP CC001.6.



Main features:

1. Three powerful Ametek motors, can work with grinder working width below 750mm.
2. The independently controlled switches avoid burning out the switch when start the vacuum.
3. Bersi patent Auto Pulsing technology, no manual cleaning, save the labour time greatly.
4. OSHA compliant 2- stage filtration system. In the primary stage, the two cylindrical filters take turns to pulsing clean.
In the second stage, 3PCS H13 HEPA filters with 99.99% @0.3µm efficiency.

Model	Unit	AC32	AC31
Voltage		240V 50/60Hz	110V 50/60Hz
Power	kw	3.6kw	2.4kw
	HP	5.4	3.4
Current	Amp	14.4	18
Water lift	Kpa	24	20
	inch	100	82
Airflow (max)	cfm	354	285
	m ³ /h	600	485
Pre-filter		3.0m ² >99.9% @0.3µm	
Filter cleaning		Innovated auto clean system	
Hepa filter(H13)		3.6m ² >99.99% @0.3µm	
Collection		Continuous drop-down bag	
Dimension	inch	22X32.3X56	
	mm	630*870*1400	
Weight	lbs	154	
	kg	70	

Standard accessory



2" brush



2" S wand



2.75"/ 2" reducer



2" hose cuff



2" EVA double layer hose



Innovated Auto Clean System



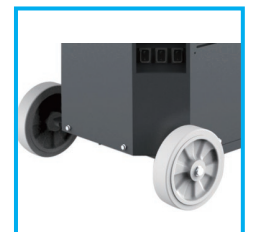
2 pcs H11 filters rotate to function filter cleaning



Second stage 3 pcs H13 HEPA certified filters



Individual switches control the 3 motors separately



8" heavy duty non marking rear wheel

3010T/3020T

3 motors Auto Pulsing dust extractor

3020T/3010T is a triple motors Auto pulsing HEPA dust extractor. The Bersi patent Auto pulsing technology get rid of the air compressor and manual cleaning, reliable and effective, ensuring 100% uninterrupted working. It equipped with three large filters with 3.0 m² filter area in total.3020T/3010T has plenty power to be connected to any mid or larger size grinders ,scarifiers, shot blasters



Main features:

1. Three powerful Ametek motors, can work with grinder working width below 750mm perfectly.
2. The independently controlled switches avoid burning out the switch when start the vacuum.
3. Bersi patent Auto Pulsing technology, no manual cleaning, save the labour time greatly.
4. Build in three big filters inside take turns to pulsing clean, keep the vacuum powerful always.

Model	Unit	3020T	3010T
Voltage		240V 50/60Hz	110V 50/60Hz
Power	kw	3.6kw	2.4kw
	HP	5.4	3.4
Current	Amp	14.4	18
Water lift	Kpa	24	20
	inch	100	82
Airflow (max)	cfm	354	285
	m ³ /h	600	485
Filter		3.0m ² >99.9% @0.3um	
Filter cleaning		Innovated auto clean system	
Collection		Continuous drop-down bag	
Dimension	inch	21.5X28X55	
	mm	550X710X1400	
Weight	lbs	132	
	kg	60	



Innovated Auto Clean System



2 pcs H11 filters rotate to function filter cleaning



Individual switches control the 3 motors separately



8" heavy duty non marking rear wheel

AC750

Three phase Auto Pulsing HEPA dust extractor

AC750 is a powerful three phase dust extractor, with the UL certified turbine motor provide high water lift. It equipped with Bersi patent Auto Pulsing technology, simple and reliable, remove the air compressor unstable concern and save the manual cleaning time, real 24 hours non stop working. AC750 build in 2 large filters inside rotate self cleaning, keep the vacuum powerful always.



Main features:

1. Bersi patent Auto Pulsing technology, no manual cleaning, reliable and effective, save the labour time greatly.
2. Equipped with high vacuum turbine motor, support 24 hours continuously working.
3. Endless drop down bag system, ensure safe handling and disposal of dust.

Model	Unit	AC750
Voltage		230V 60Hz
Power	kw	8.6kw
	HP	11.5
Current	Amp	32
Water lift	Kpa	34
	inch	136
Airflow (max)	cfm	364
	m³/h	620
Filter		4.0m ² >99.9%@0.3um
Filter cleaning		Innovated auto clean system
Collection		Continuous drop-down bag
Dimension	inch	24.8X41.7X57
	mm	630X1060X1450
Weight	lbs	374
	kg	170



Innovated Auto Clean System



2 pcs H11 filters rotate to function filter cleaning



High vacuum turbine motor



2.5" PU hose 32.8ft 2.75"/2.5" reducer

AC800

Three phase Auto Pulsing HEPA dust extractor

AC800 is a very powerful three phase dust extractor, integrated with a high performance pre-separator which removes up to 95% of the fine dust before it come into the filter. It features the innovative auto clean technology, allows the users continuous operation without stop for manual cleaning constantly, improves productivity greatly. AC800 equipped with 2-stage filtration system, 2 cylindrical filters in the first stage rotate self cleaning , 4 HEPA certified H13 filters in the second stage promise the operators safe and clean air. The continuous folding bag system ensures simple, dust-free bag changes.



Main features:

1. The heavy duty turbine motor provides 24h continuously working.
2. Integrated pre-separator.
3. The patent and innovated auto clean system is very reliable and low service cost.
4. Designed for large size grinder, polishing machine and shot blaster.

Model	Unit	AC800
Voltage		230V 60Hz
Power	kw	6.3kw
	HP	8.5
Current	Amp	22
Water lift	Kpa	37
	inch	128
Airflow (max)	cfm	364
	m ³ /h	620
Filter		4.0m ² >99.9% @0.3um
Filter cleaning		Innovated auto clean system
Collection		Continuous drop-down bag
Dimension	inch	23.6X40.5X55.9
	mm	600X1030X1420
Weight	lbs	462
	kg	210



Innovated Auto Clean System



2 pcs H11 filters rotate to function filter cleaning



Second stage 4 pcs H13 HEPA certified filters



2.5" PU hose 32.8ft

2.75"/2.5" reducer

AC900

Three phase Auto Pulsing HEPA dust extractor

AC900 is a powerful three phase dust extractor, with the UL certified turbine motor provide high water lift. It equipped with Bersi patent Auto Pulsing technology, simple and reliable, remove the air compressor unstable concern and save the manual cleaning time, real 24 hours non stop working. AC900 is a 2-stage filtration dust extractor, primary 2 large filters take turns to pulsing clean, secondary 4 cylindrical filters are tested and HEPA 13 certified.



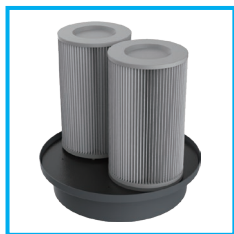
Main features:

1. Bersi patent Auto Pulsing technology, no manual cleaning, reliable and effective, save the labour time greatly.
2. OSHA compliant dust extractor, each HEPA filter individually tested and certified with EN1822-1 and IEST RP CC001.6.
3. Endless drop down bag system, ensure safe handling and disposal of dust.

Model	Unit	AC900
Voltage		230V 60Hz
Power	kw	6.3kw
	HP	8.5
Current	Amp	22
Water lift	mBar	320
	inch	128
Airflow (max)	cfm	364
	m³/h	620
Filter		4.0m ² >99.9%@0.3um
Filter cleaning		Innovated auto clean system
Collection		Continuous drop-down bag
Dimension	inch	24.8X41.7X57
	mm	630X1060X1450
Weight	lbs	418
	kg	190



Innovated Auto Clean System



2 pcs H11 filters rotate to function filter cleaning



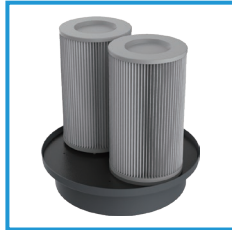
Second stage 4 pcs H13 HEPA certified filters



DC3600

Wet&dry Auto Pulsing industrial vacuum

DC3600 is a single phase auto pulsing vacuum with 75L dustbin. It has 3 large commercial motors to provide enough power for any environment or application where there are large quantities of dust to be collected. This model equipped with Bersi patent auto pulsing technology, get rid of the frequent manual cleaning while working, save labour greatly.



PTFE coated HEPA filter



Main features:

1. Wet and dry.
2. 75L detachable tank.
3. 3 independantly controlled Ametek motors to provide high airflow.
4. The patent auto pulsing technology without any printed circurd board, more reliable and low maintaince cost Vs. similar models from competitors.
5. Build in 2 pcs H class filters rotate filter cleaning, every 25S is a cleaning cycle with each filter self cleaning 4S.

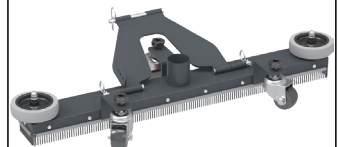
Model	Unit	DC3600	DC3600
Voltage		110V 50/60Hz	230V 50/60Hz
Power	kw	3.3kw	3.6kw
	HP	4.6	5.4
Current	Amp	27	14.4
Water lift	mbar	240	240
	inch	100	100
Airflow (max)	cfm	354	354
	m ³ /h	600	600
Filter type		HEPA filter "TORAY" polyester	
Filter area (cm ²)		30000	
Filter capacity(H11)		0.3um > 99.9%	
Filter cleaning		Auto Pulsing	
Tank Volume(Gal)		20	
Dimension	inch	24X28X53	
	mm	610x710x1350	
Weight	lbs	132	
	kg	60	

Standard accessories

2" tools kit



Optional accessory



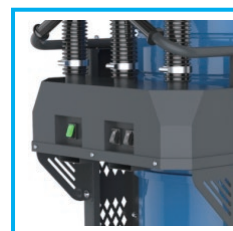
Innovated Auto
Clean System



2 pcs H11 filters
rotate to function filter cleaning



8" heavy duty non
marking rear wheel



Individual switches control
the 3 motors separately

TS1000

Single phase 1 motor HEPA dust extractor

TS1000 is equipped with a conical pre filter and one H13 HEPA filter. The main filter with 1.7 m² filter surface ,each of the HEPA filter is independently tested and certified. TS1000 can separate the fine dust with efficiency > 99.99%@0.3µm, ensuring your work space is a clean and safe environment. TS1000 is recommended for small grinders and hand held power tools.



Main features:

1. OSHA compliant H13 HEPA filter tested and certified with EN1822-1 and IEST RP CC001.6.
2. "No marking type" rear wheels and lockable front caster.
3. Efficient jet pulse filter cleaning.
4. Continuous bagging system ensures quick and dust-free bag changes.
5. Smart and portable design, transporting is like a breeze.

Model	Unit	TS1100
Voltage		110V 50/60Hz
Power	kw	1.2kw
	HP	1.7
Current	Amp	9
Water lift	Kpa	24
	inch	100
Airflow (max)	cfm	118
	m ³ /h	200
Pre-filter	m ²	1.7
	ft ²	18
Hepa filter(H13)	m ²	1.2
	ft ²	13
Filter cleaning		Jet pulse filter cleaning
Dimension	inch	16.5X26.7X43.3
Weight	lbs	66
Collection		Continuous drop-down bag

Standard accessory	
	
1.5" brush	1.5" L wand 2-pc
	
1.5" EVA hose, 5.0m	
	
1.5" soft hose cuff	1.5" solid hose cuff



Jet pulse filter cleaning



Pre-filter (F8)



Hepa filter(H13)

TS2000

Single phase 2 motors HEPA dust extractor

TS2000 is a two engine HEPA dust extractor .It is equipped with a main filter as the first and two H13 filter as the final. Each HEPA filter is individually tested and certified to have a minimum efficiency of 99.99% at 0.3 microns. which meets the new silica requirements. This professional dust extractor is excellent for building, grinding, plaster and concrete dust.



Main features:

1. OSHA compliant H13 HEPA filter tested and certified with EN1822-1 and IEST RP CC001.6.
2. Unique jet pulse filter cleaning system, efficiently purges the pre-filter without opening the vacuum to maintain a smooth airflow, and to avoid creating a second dust hazard.
3. Both continuous bagging system for effective dust storage and a regular plastic bag system are compatible.
4. An hour counter and vacuum meter for filter control are standard.

Model	Unit	TS2100
Voltage		110V 50/60Hz
Power	kw	2.4kw
	HP	3.4
Current	Amp	18
Water lift	Kpa	24
	inch	100
Airflow (max)	cfm	258
	m ³ /h	400
Pre-filter	m ²	3.0
	ft ²	32
Hepa filter(H13)	m ²	2.4
	ft ²	26
Filter cleaning		Jet pulse filter cleaning
Dimension	inch	22.4X28X51.2
Weight	lbs	105
Collection		Continuous drop-down bag

Standard accessory	
	
2" floor brush	2" S wand, aluminum
	
2.75"/2" reducer	2" EVA hose, 7.5m
	
2" hose cuff, 2-pc	



controlling the on/off independently



Jet pulse filter cleaning



Pre-filter (F8)



Hepa filter(H13)

TS3000

Single phase 3 motors HEPA dust extractor

TS3000 is a HEPA concrete dust extractor . With 3 large Ametek motors,TS3000 has plenty power to be connected to any mid or larger size grinders ,scarifiers, shot blasters to extract freshly cut, friable concrete dust. Certified HEPA filtration to 99.99% @ 0.3 microns to guarantee that the vacuum exhaust is absolutely dust-free. TS3000 is supplied with a complete tool kit, including hose, wand and floor tools.



Main features:

1. OSHA compliant H13 HEPA filter tested and certified with EN1822-1 and IEST RP CC001.6.
2. Unique jet pulse filter cleaning technology ensures efficient and clean filtration.
3. Welded frame/platform provide sturdy support in tough jobsite.
4. The 22 meters long plastic bag can be separated to approximately 40 individually sealed bags for fast, safe handling and disposal of dust.
- 5.Compact vertical unit is easy to maneuver and transport.

Model	Unit	TS3000	TS3100
Voltage		240V 50/60Hz	120V 50/60Hz
Power	kw	3.6kw	2.4kw
	HP	5.1	3.4
Current	Amp	14.4	18
Water lift	Kpa	24	20
	inch	100	82
Airflow (max)	cfm	354	285
	m ³ /h	600	485
Pre-filter	m ²	4.5	
>99.5%@1.0um	ft ²	48	
Hepa filter(H13)	m ²	3.6	
>99.99%@0.3um	ft ²	39	
Filter cleaning		Jet pulse filter cleaning	
Dimension	inch	22X32.3X58	
Weight	lbs	143	
Collection		Continuous drop-down bag	

Standard accessory	
	
2" floor brush	2" S wand, aluminum
	
2.75"/2" reducer	2" EVA hose 7.5m
	
2" hose cuff, 2-pc	2.5" PU hose with HPVC spiral,10m
	
2.75"/2.5" reducer	



controlling the on/off independently



Jet pulse filter cleaning



Pre-filter (F8)



Hepa filter(H13)



Unique open/close door is convinient to make filter cleaning

B1000



Main features:

1. Built in small size and stackable, makes it easy to move and storage.
2. Installed with a prefilter and H13 certified HEPA filter, the operators can be certain the entire room is benefiting from fresh air.
3. Easy to clean HEPA filter - The HEPA filter is protected by a metal mesh which makes it easy to vacuum it without damaging it.

Air Scrubber

B1000 is a portable HEPA air scrubber with variable speed control and max airflow 1000m³/h. It equipped with a high efficiency 2-stage filtration system, the primary is a coarse filter, secondary with a large size professional HEPA 13 filter, which is tested and certified with efficiency of 99.99%@0.3 microns. B1000 has double warning lights, the red light warns filter broken, the orange light indicates filter clog. This machine is lightweight and the cabinet is made of rotomolded plastic for maximum durability. It can be used as an air cleaner and a negative air machine both.

Model	B1000
Voltage	1 phase, 120V
Power	0.25HP
Current	2.1A
Airflow(cfm)	2 speed, 300/600
Primary filter	Disposable Polyester Media
H13 filter area	56ft ²
Noise level 2 speed	58/65 dB(A)
Dimension	18.11"X14.17"X18.11"
Weight	44lbs



Pre filter



H13 filter



Indicator light

B2000



Main features:

1. Equipped an extra socket.
2. Non-Marking, Puncture-Free lockable wheels.
3. Fitted with an air outlet connector with 254 mm diameter for connecting the evacuation hose (8m max).

Air Scrubber

B2000 is a powerful and reliable air scrubber to handle tough air cleaning jobs in construction site. The max airflow is 2000m³/h, and can be run at two speeds. The primary filter will vacuum the big materials before it comes to the HEPA filter. The bigger and wider H13 filter is tested and certified with efficiency >99.99% @ 0.3 microns, to create a super clean air. A red indicator light warns when filters are clogged, an orange indicator light warns when filters are broken or leaked. Thanks to the compact and light design, the machine is easy to move and portable in transportation.

Model	B2000
Voltage	1 phase, 120V
Power	0.8HP
Current	4.8A
Airflow(cfm)	2 speed, 600/1200
Pre filter area	Disposable Polyester Media
H13 filter area	140ft ²
Noise level 2 speed	58/65 dB(A)
Dimension	27.95"X19.68"X33.46"
Weight	115lbs



Pre filter



H13 filter



Indicator light

T3 Series

Single phase continuous bag dust extractor

Standard imported polyester coated HEPA filter, applies to continuous working condition, small size and large amount dust, specially applies to the floor grinding and polishing industry. Adjustable height , handling and transporting easily .



Main features:

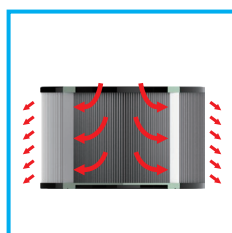
1. Three Ametek motors, for controlling the on/off independently.
2. Continuous drop-down bagging system, easy and fast loading/unloading.
3. Imported polyester fiber PTFE coated HEPA filter, low pressure loss, high filter efficiency .

Model	T302	T302-110V
Voltage	240V 50/60Hz	110V 50/60Hz
Power	3.6kw / 5.1HP	2.4kw / 3.4HP
Current (Amp)	14.4	18
Water lift (inch)	100	82
Airflow (cfm)	354	285
Filter type	HEPA filter "TORAY" polyester	
Filter area	3.0 m ² / 32 ft ²	
Filter capacity(H11)	0.3um > 99.9%	
Filter cleaning	Jet pulse filter cleaning	
Dimension	660mmX675mmX1185mm / 26"X26.5"X46.5"	
Weight	50kg / 114 lbs	

Standard accessory



User friendly design convenient for removing the motor head.



Jet pulse filter cleaning



D70 aluminum die caster inlet, compatible for D50/D40 tools.

T5 Series

Single phase double barrel industrial vacuum

2 stage filtering, imported polyester fiber PTFE coated HEPA filter, applies to continuous working condition, small size and large amount dust, specially applies to the floor grinding and polishing industry.



Main features:

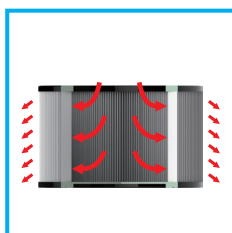
1. Three Ametek motors, for controlling the on/off independently.
2. Continuous drop-down bagging system, easy and fast loading/unloading.
3. 2 stage filtering, pre-filter is cyclone separator, Filtering more than 98% dust, make fewer dust to enter in vacuum cleaner, prolong the vacuums working time, to protect the filters in vacuum and extend the life time.
4. Imported polyester fiber PTFE coated HEPA filter, low pressure loss, high filter efficiency.

Model	T502	T502-110V
Voltage	240V 50/60Hz	110V 50/60Hz
Power	3.6kw / 5.1HP	2.4kw / 3.4HP
Current (Amp)	14.4	18
Water lift (inch)	100	82
Airflow (cfm)	354	285
Filter type	HEPA filter "TORAY" polyester	
Filter area	3.0 m ² / 32 ft ²	
Filter capacity(H11)	0.3um > 99.9%	
Filter cleaning	Jet pulse filter cleaning	
Dimension	650mmX1030mmX1460mm / 25.7"X40.5"X57.5"	
Weight	80kg / 182 lbs	

Standard accessory



User friendly design convenient for removing the motor head.



Jet pulse filter cleaning



D70 aluminum die caster inlet, compatible for D50/D40 tools.

T0

T0 Pre separator

When large amount of dust produced during the grinding, it is advisable to use a pre separator. The special cyclone system captures > 90% of the material before vacuuming, greatly improve the filter efficiency and protect your dust extractor from clogging easily. T0 can be used in conjunction with all common industrial vacuums and dust extractors .T02 can be lowered to 125cm when transportation.

Model	T01	T02
Collection	Continuous drop-down bag	
Height adjustment	No	Yes
Dimension (inch)	26X28X55	
Weight (lbs)	80	

Main features:

- 1.More efficient work performance without interrupted often to clean the filter.
- 2.Continuous bagging system to collect the dust easily.
- 3.Very low cost maintenance.



X Series

Cyclone separator

Can work with different vacuum cleaners
Filtering > 90% dust , make fewer
dust to enter in vacuum cleaner,lengthen
the vacuums working time , to protect the
filters in vacuum and extend the life time.

Model	X60	X90
Tank volume (L)	60 L	90 L
Dimension (inch)	17.7X17.7X34.3	17.7X17.7X40.6
Weight (lbs)	35.3	37.5



T05

New separator enable the operator to change bags while the vacuum is working

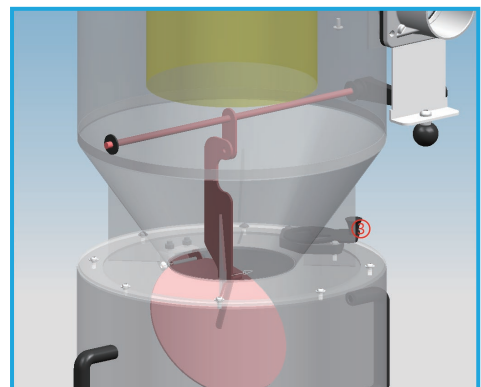
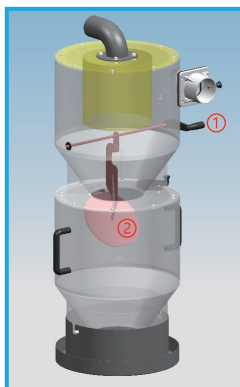
A vacuum cleaner pre separator is a component in some vacuum cleaning systems that separates larger debris and particulate matter from the air stream before it reaches the main collection container or filter. The pre separator acts as a pre-filter, trapping dirt, dust, and other larger particles before they can clog the vacuum's main filter. This helps to prolong the life of the main filter and ensure that the vacuum continues to operate effectively. By using the most other regular separator, the operator have to turn off the vacuum to let the dust drop down into the bag of the separator when changing bags. While the T05 dust separator build a smart design of the pressure relief valve, which enables any dust extractor to continuously operate with limited downtime, improve the working efficiency. T05 can be lowered to 115cm when in transportation.

Main features:

1. The drop-down bag system,ensure a safe and clean dust disposal.
2. By close and open the pressure relief valve, the operator can change the bags without turn off the vacuum. Ensure a continuous working.
3. Height can be lowerd to 115mm, easy for transportation.



Model	T05
Collection	Continuous drop-down bag
Dimension (inch)	28.3X22.8X59
Weight (lbs)	105.8



In normal working status, the flap ② is opening, the dust will drop down to to the barrel below.

When changing bags, turning the handle ① to "Bag replacing" position, close the flap ②. Then open the pressure relief valve ③, the dust in the barrel will drop down into the bags. Replace a new bag, vacuum keeps working.

After the bag replacing finished, turn the handle to the "Vacuum working" position, the flap in the barrle will open. Close the pressure reflief valve③, the vacumm keeps working.

D3

Wet vacuum for slurry

D3 is a wet and dry single phase industrial vacuum, which can deal with liquid and dust the same time. The jet pulse filter cleaning is very effective for find dust, the liquid level switch design will protect the motor when water is full. D3 is your ideal choice for wet grinding and polishing.



Main features:

1. Wet and dry , with a 2.3ft width front-mount squeegee , especially designed for slurry.
2. Strong frame and heavy duty casters more durable in tough site.
3. 24Gal overturning tank save labour and time.
4. Effective jet pulse filter cleaning for fine dust.
5. With a liquid level switch, the vacuum will stop automatically when the water is full. Protect the motor from burning-out.

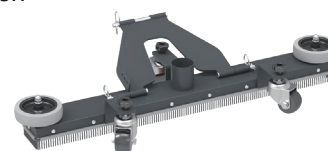
Model	Unit	D3280	D3180
Voltage		240V 50/60Hz	110V 50/60Hz
Power	kw	3.6kw	2.4kw
Current	Amp	14.4	18
Vacuum	mBar	240	200
Airflow (max)	m ³ /h	600	485
Dimension	inch	28.9X35.8X38.6	
Weight	lbs	88.2	
Tank volume	L	92	
Tank Type		HEPA filter "TORAY" polyester	
Filter area	cm ²	5000	
Filter capacity	H11	0.3um > 99.9%	
Filter cleaning		Jet pulse filter cleaning	

Standard accessory



Optional accessory

Front brush



Jet pulse filter cleaning



Overturning tank



Strong frame

S3 Series

Single phase wet & dry vacuum

S3 series industrial vacuum cleaners are mainly used for non-continuous cleaning of manufacturing areas or for overhead cleaning. Featured as compact and flexible, they are easy to move. There are no impossible applications for the S3, from the laboratory, workshop, mechanical engineering to the concrete industry.

You can choose this model for dry material only or for both wet and dry applications.



H-class HEPA filter, PTFE coated
"TORAY" polyester



Main features:

1. Three Ametek motors, for controlling the on/off independently.
2. Detachable barrel, makes the dust dump work so easy.
3. Large filter surface with integrated filter cleaning system
4. Multi purposes flexibility, suitable for wet, dry, dust applications.

Model	S302	S302-110V	S300	S300-110V
Voltage	240V 50/60Hz	110V 50/60Hz	240V 50/60Hz	110V 50/60Hz
Power	3.6kw / 5.1HP	2.4kw / 3.4HP	3.6kw / 5.1HP	2.4kw / 3.4HP
Current (Amp)	14.4	18	14.4	18
Water lift (inch)	100	82	100	82
Airflow (cfm)	354	285	354	285
Tank volume	60 L			
Filter type	HEPA filter "TORAY" polyester		HEPA filter	
Filter area	32 ft ²		16 ft ²	
Filter capacity(H11)	0.3um > 99.9%			
Filter cleaning	Jet pulse filter cleaning			
Dimension	610X670X1325mm / 24"X26.4"X52.2"			
Weight	55kg / 125 lbs			

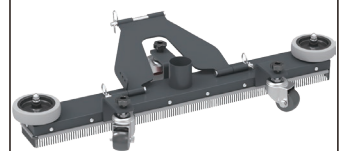
Standard accessory

2" tools kit

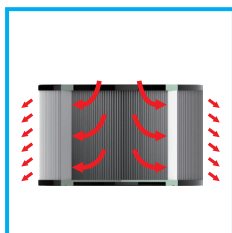


Optional accessory

Front brush



User friendly design convenient
for removing the motor head.



Jet pulse filter cleaning



Independant controlled
switches



2.75" aluminum die caster inlet,
compatible for 2"/1.5" tools.



Detachable tank



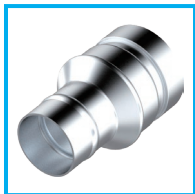
1.5" Tool kit

- ① 1.5" crevice tool
- ② 1.5" EVA hose 2.5m
- ③ 1.5" solid hose cuff
- ④ 1.5" soft hose cuff
- ⑤ 1.5" S wand 2-pc
- ⑥ 1.5" round brush
- ⑦ 1.5" squeegee
- ⑧ 1.5" brush



2" Tool kit

- ① 2" floor brush
- ② 2" S wand, aluminum
- ③ 2"/1.5" reducer
- ④ 2" round brush
- ⑤ 2" EVA hose ,3m
- ⑥ 2" crevice tool, aluminum
- ⑦ 2" hose cuff, 2-pc



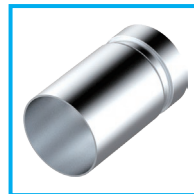
2.75"/2" reducer



2.75"/1.5" reducer



2.75"/3/4" reducer



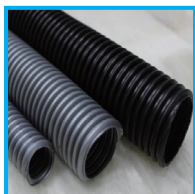
2.75" connector



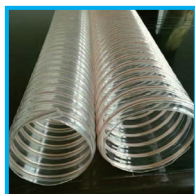
2" connector



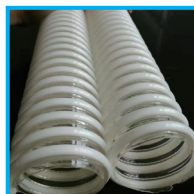
2.75"/2" dispenser(2 outlets)



2"/1.5"
EVA hose



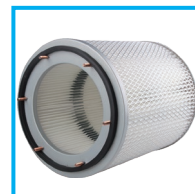
2"/3/4"
PU hose with steel spiral



2"/2.75"
PU hose with HPVC spiral



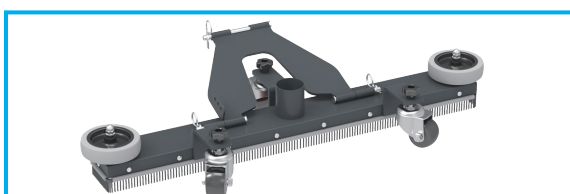
HEPA filter
for automatic jet pulse
filter cleaning vacuum



HEPA filter
for automatic self
cleaning vacuum



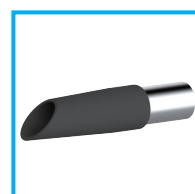
HEPA filter
for jet pulse filter
cleaning vacuum



1.5" front brush W/D, working width 700 mm



continuous folding bag



2" rubber crevice tool



12- pocket filter bag



Bersi Industrial Equipment Co.,Ltd

Address: No.2588,Wuzhong avenue, Yuexi town,
Wuzhong District, Suzhou, China .

Phone No. :+86 512 66895534

Website: www.bersivac.com

E-Mail: info@bersivac.com