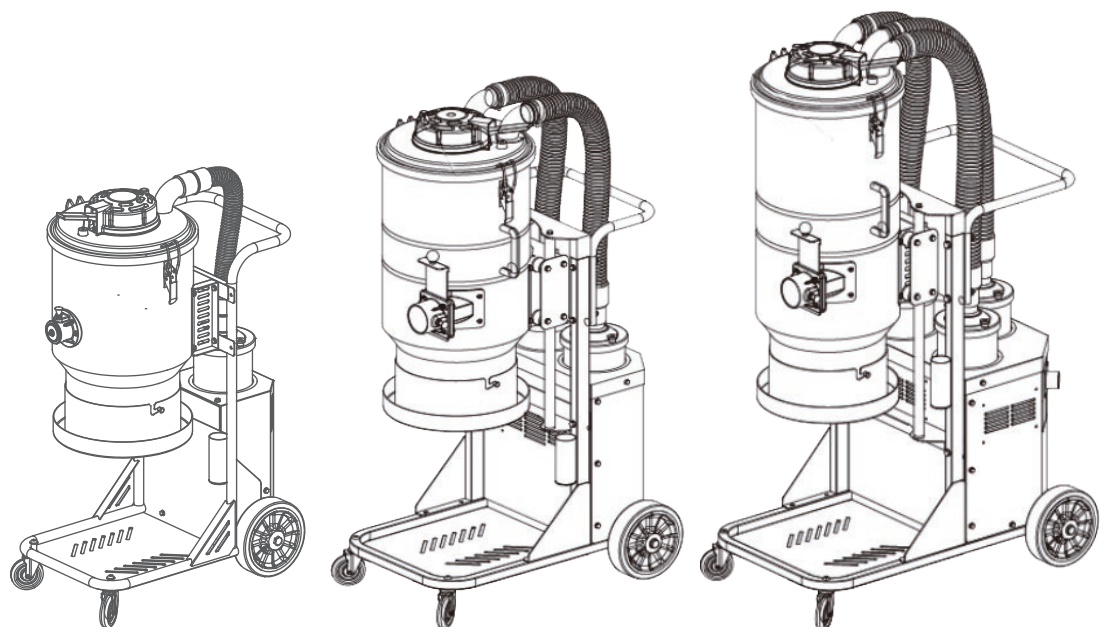




Bersi Industrial Equipment Co.,Ltd

# Industrial vacuums Dust extractors



# About Us

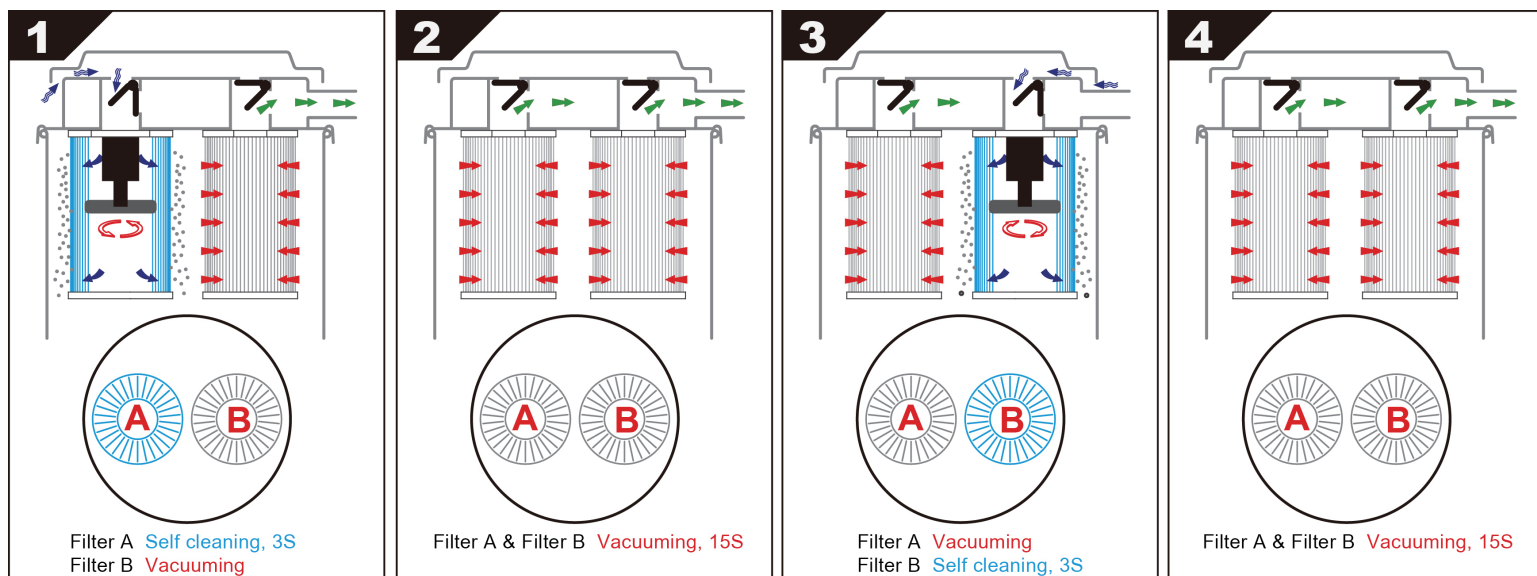
## Bersi Industrial Equipment Co.,Ltd

Bersi Industrial Equipment Co.,Ltd. is a leading China manufacturer of patented industrial vacuum and dust extractor systems with innovative technology, which focus on providing the most reliable industrial vacuum cleaner on the market. Our R&D team have put lots of effort into making our industrial vacuum to be the best in durability and efficiency.

The engineers and designers are dedicated to designing&producing vacuums that meet or exceed environmental and safety standard, protect the working site to be safer and cleaner.

## How does Bersi Auto pulsing vacuum work

### Innovated Auto Clean System



# AC150H



## Main features:

1. Automatic Clean: The innovated auto clean system ensure the vacuum works at high suction all the time without clogging, provides a continuous use mode. Time and labor savings greatly.
2. Equipped with 2 HEPA filters: stops 99.95% of fine dusts at 0.3  $\mu\text{m}$ .
3. Dry only for large volume concrete fine dust.
4. 38L injection molding tank provide big storage capacity.
5. Power socket for power tool use activates automatically on start/shut-down of the vacuum cleaner.
6. Suction power control for adapted suction performance.
7. Automatic trailing mechanism for emptying the suction hose completely.
8. Large and robust wheels and castors built to withstand the tough construction site.
9. Cable wrap for convenient cord storage.
10. Practical accessory case and storage area.

Model	AC150H	
Voltage	1 phase	1 phase
	220V-240V 50/60Hz	110V-120V 50/60Hz
Power	1.2 kw	1.3 kw
	1.7 HP	1.85 HP
Current	5.2 amp	10.8 amp
Water lift(max)	250 mbar	250 mbar
	104 inch	104 inch
Airflow(max)	154 cfm	153 cfm
	262 m <sup>3</sup> /h	260 m <sup>3</sup> /h
Auto clean	Yes	Yes
Filter quantity	2 pcs	2 pcs
Filter efficiency	HEPA, >99.95%@0.3um	
Airflow adjustable	Yes	Yes
Power socket	10A	10A
Power tool quick start	Yes	Yes
Remote control start	Optional	Optional
Dimension	15.15*19.7*22.4 inch	
	385*500*570 mm	
Tank volume	10Gal/38L	
Weight	29lbs/13.5kg	

## Auto Clean W/D HEPA Vacuum

AC150H is a one motor dry class H certified dust extractor with Bersi innovated auto clean system, 38L tank volume. There are 2 filters rotate self clean to maintain high suction always. The HEPA filter captures 99.95% of particles at 0.3 microns. It is a portable and lightweight vacuum cleaner for dry fine dust. Ideal for power tool requires continuous working, especially suited for extracting concrete and rock dust in construction site and workshop.

### Standard tools kit



D35 Antistatic hose, 4M



HEPA filter, 2PCS



D35 plastic crevice tool, 1PC



Handle, 1PC



D35 floor brush, 1PC



Connection sleeve, 1PC



HEPA non woven dust bag, 1PC



D35 wand, 2PCS



PE disposal bag, 5PCS

# AC18

## One Motor Auto Clean HEPA Dust Extractor

The AC18 is a dust extractor featuring one motor design and innovated auto clean system. The 1800W single motor generates powerful suction and high air flow. It incorporates a two - stage filtration mechanism. In the first stage, two filters rotate self cleaning. The second stage utilizes a HEPA 13 filter, boasting an efficiency of > 99.99% at 0.3um. Its most remarkable feature is the auto clean technology. This function eliminates the hassle of frequent manual filter cleaning caused due to clogging, ensuring truly uninterrupted operation. The continuous folding bag system enables safe and clean dust disposal. The AC18 is an ideal choice for hand grinders, edge grinders, and other power tools.



### Main features:

1. Innovated auto clean technology, ensuring the vacuum keeps strong suction all the time.
2. 2-stage filtration system, each HEPA 13 filter is individually tested and certified with EN1822-1 and IEST RP CC001.6.
3. 8" heavy duty "No marking type" rear wheels and 3" lockable front caster.
4. Continuous bagging system ensures quick and dust-free bag changes.
5. Light and portable design, easy for transportation.

Model	AC18
Power (kw)	1.8kw
Voltage	220-240V, 50/60HZ
Amps	7.5
Airflow (m <sup>3</sup> /h)	220
Vacuum (mBar)	320
Pre-filter	0.8m <sup>2</sup> > 99.95%@0.3um
Hepa filter (H13)	1.2m <sup>2</sup> > 99.99%@0.3um
Filter cleaning	Jet pulse filter cleaning
Dimension (mm)	420×680×1100
Weight (kg)	34
Collection	Continuous drop-down bag

Standard accessory	
	
D38 brush	D38 L wand
	
D38 EVA hose, 5.0m	
	
D38 soft hose cuff	D38 solid hose cuff



Innovated auto clean



Pre filter, 2PCS



Hepa filter (H13)

# AC22

## 2 motors Auto Pulsing HEPA dust extractor

AC22 is a twin motors Auto pulsing HEPA dust extractor .

The Bersi patent Auto pulsing technology get rid of the air compressor and manual cleaning, reliable and effective, ensuring 100% uninterrupted working. The first stage equipped with two cylindrical filters with 3.0 m<sup>2</sup> filter area in total. The second stage has 2pcs H13 HEPA filter tested and certified with EN1822-1 and IEST RP CC001.6.



### Main features:

1. Two powerful Ametek motors, ideal for grinder working width below 600mm.
2. Bersi patent Auto Pulsing technology, no manual cleaning, save the labour time greatly.
3. OSHA compliant 2-stage filtration system. In the primary stage, the two cylindrical filters take turns to pulsing clean. In the second stage, 2PCS H13 HEPA filters with 99.99% @0.3µm efficiency.

Model	AC22
Power (kw)	2.4kw
Voltage	240V 50/60Hz
Amps	9.6
Airflow (m <sup>3</sup> /h)	400
Vacuum(mBar)	240
Pre-filter	3.0m <sup>2</sup> >99.9%@0.3um
Hepa filter(H13)	2.4m <sup>2</sup> >99.99%@0.3um
Filter cleaning	Innovated auto clean system
Dimension (mm)	570X710X1240
Weight (kg)	53
Collection	Continuous drop-down bag

### Standard accessory



D50 brush



D50 S wand



D70/50 reducer



D50 hose cuff



D50 EVA double layer hose



Innovated Auto Clean System



2 pcs H11 filters rotate to function filter cleaning



Second stage 2 pcs H13 HEPA certified filters



Individual switches control the 2 motors separately



# AC32

## 3 motors Auto Pulsing HEPA dust extractor






AC32 is a triple motors Auto pulsing HEPA dust extractor . The Bersi patent Auto pulsing technology get rid of the air compressor and manual cleaning, reliable and effective, ensuring 100% uninterrupted working. The first stage equipped with two cylindrical filters with 4.0 m<sup>2</sup> filter area in total. The second stage has 3pcs H13 HEPA filter tested and certified with EN1822-1 and IEST RP CC001.6.



### Main features:

1. Three powerful Ametek motors, can work with grinder working width below 750mm.
2. The independently controlled switches avoid burning out the switch when start the vacuum.
3. Bersi patent Auto Pulsing technology, no manual cleaning, save the labour time greatly.
4. OSHA compliant 2- stage filtration system. In the primary stage, the two cylindrical filters take turns to pulsing clean. In the second stage, 3PCS H13 HEPA filters with 99.99% @0.3µm efficiency.

Model	AC32
Power (kw)	3.6kw
Voltage	240V 50/60Hz
Amps	14.4
Airflow (m <sup>3</sup> /h)	600
Vacuum(mBar)	240
Pre-filter	4.0m <sup>2</sup> >99.9%@0.3um
Hepa filter(H13)	3.6m <sup>2</sup> >99.99%@0.3um
Filter cleaning	Innovated auto clean system
Dimension (mm)	630*870*1400
Weight (kg)	70
Collection	Continuous drop-down bag

Standard accessory	
	
D50 brush	D50 S wand
	
D70/50 reducer	
	
D50 hose cuff	D50 EVA double layer hose



Innovated Auto Clean System



2 pcs H11 filters rotate to function filter cleaning



Second stage 3 pcs H13 HEPA certified filters



Individual switches control the 3 motors separately

# 3020T

## 3 motors Auto Pulsing dust extractor





3020T is a triple motors Auto pulsing HEPA dust extractor. The Bersi patent Auto pulsing technology get rid of the air compressor and manual cleaning, reliable and effective, ensuring 100% uninterrupted working. It equipped with 2 large filters with 4.0m<sup>2</sup> filter area in total. 3020T has plenty power to be connected to any mid or larger size grinders, scarifiers, shot blasters



### Main features:

1. Three powerful Ametek motors, can work with grinder working width below 750mm perfectly.
2. The independently controlled switches avoid burning out the switch when start the vacuum.
3. Bersi patent Auto Pulsing technology, no manual cleaning, save the labour time greatly.
4. Build in two big filters inside take turns to pulsing clean, keep the vacuum powerful always.

Model	3020T
Power (kw)	3.6kw
Voltage	240V 50/60Hz
Amps	14.4
Airflow (m <sup>3</sup> /h)	600
Vacuum(mBar)	240
Filter	4.0m <sup>2</sup> >99.9%@0.3um
Filter cleaning	Innovated auto clean system
Dimension (mm)	550X710X1400
Weight (kg)	60
Collection	Continuous drop-down bag

Standard accessory	
	
D50 brush	D50 S wand
	
D70/50 reducer	D50 EVA double layer hose
	
D50 hose cuff	



Innovated Auto Clean System



2 pcs H11 filters rotate to function filter cleaning



Individual switches control the 3 motors separately

# AC750

## Three phase Auto Pulsing HEPA dust extractor

AC750 is a powerful three phase dust extractor, with the UL certified turbine motor provide high water lift. It equipped with Bersi patent Auto Pulsing technology, simple and reliable, remove the air compressor unstable concern and save the manual cleaning time, real 24 hours non stop working. AC750 build in 2 large filters inside rotate self cleaning, keep the vacuum powerful always.



### Main features:

1. Bersi patent Auto Pulsing technology, no manual cleaning, reliable and effective, save the labour time greatly.
2. Equipped with high vacuum turbine motor, support 24 hours continuously working.
3. Endless drop down bag system, ensure safe handling and disposal of dust.

Model	AC750
Power (kw)	7.5kw
Voltage	380V 50Hz
Amps	16.7
Airflow (m <sup>3</sup> /h)	530
Vacuum (mBar)	320
Filter	4.0m <sup>2</sup> >99.9% @ 0.3um
Filter cleaning	Innovated auto clean system
Dimension (mm)	630X1060X1450
Weight (kg)	170
Collection	Continuous drop-down bag



Innovated Auto Clean System



2 pcs H11 filters rotate to function filter cleaning



High vacuum turbine motor





# AC800

## Three phase Auto Pulsing HEPA dust extractor



AC800 is a very powerful three phase dust extractor, integrated with a high performance pre-separator which removes up to 95% of the fine dust before it come into the filter. It features the innovative auto clean technology, allows the users continuous operation without stop for manual cleaning constantly, improves productivity greatly. AC800 equipped with 2-stage filtration system, 2 cylindrical filters in the first stage rotate self cleaning , 4 HEPA certificated H13 filters in the second stage promise the operators safe and clean air. The continuous folding bag system ensures simple, dust-free bag changes.



### Main features:

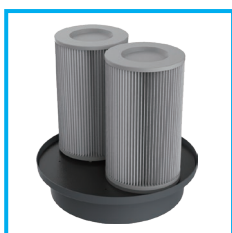
1. The heavy duty turbine motor provides 24h continuously working.
2. Integrated pre-separator.
3. The patent and innovated auto clean system is very reliable and low service cost.
4. Designed for large size grinder, polishing machine and shot blaster.

Model	AC800
Voltage	3 phase
	380V 50Hz
Power (kw)	7.5kw
Current	16.7A
Vacuum(mBar)	320mbar
Airflow(Max)	530m <sup>3</sup> /h
Filter cleaning	Innovated auto clean system
Dimension (mm)	600X1030X1420
Weight (kg)	210

Standard accessory	
	
D50 brush	D50 S wand
	
D70/50 reducer	
	
D50 hose cuff	D50 EVA double layer hose 7.5m



Innovated Auto Clean System



2 pcs H11 filters rotate to function filter cleaning



Second stage 4 pcs H13 HEPA certified filters

Standard accessory	
	
D76 PU hose 10m	D70/76 reducer

# AC900

## Three phase Auto Pulsing HEPA dust extractor

AC900 is a powerful three phase dust extractor, with the UL certified turbine motor provide high water lift. It equipped with Bersi patent Auto Pulsing technology, simple and reliable, remove the air compressor unstable concern and save the manual cleaning time, real 24 hours non stop working. AC900 is a 2-stage filtration dust extractor, primary 2 large filters take turns to self clean, secondary 4 cylindrical filters are tested and HEPA 13 certified.



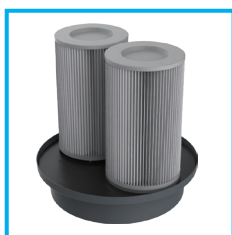
### Main features:

1. Bersi patent Auto Pulsing technology, no manual cleaning, reliable and effective, save the labour time greatly.
2. OSHA compliant dust extractor, each HEPA filter individually tested and certified with EN1822-1 and IEST RP CC001.6.
3. Endless drop down bag system, ensure safe handling and disposal of dust.

Model	AC900
Power (kw)	7.5kw
Voltage	380V 50Hz
Amps	16.7A
Airflow (m <sup>3</sup> /h)	530
Vacuum(mBar)	320
Pre-filter	4.0m <sup>2</sup> >99.9%@0.3um
Hepa filter(H13)	4.8m <sup>2</sup> >99.99%@0.3um
Filter cleaning	Innovated auto clean system
Dimension (mm)	630X1060X1450
Weight (kg)	190
Collection	Continuous drop-down bag



Innovated Auto Clean System



2 pcs H11 filters rotate to function filter cleaning



Second stage 4 pcs H13 HEPA certified filters



# DC3600

## Wet&dry Auto Pulsing industrial vacuum

DC3600 is a single phase auto pulsing vacuum with 75L dustbin. It has 3 large commercial motors to provide enough power for any environment or application where there are large quantities of dust to be collected. This model equipped with Bersi patent auto pulsing technology, get rid of the frequent manual cleaning while working, save labour greatly.



PTFE coated HEPA filter



### Main features:

1. Wet and dry.
2. 75L detachable tank.
3. 3 independently controlled Ametek motors to provide high airflow.
4. The patent auto pulsing technology without any printed circuit board, more reliable and low maintenance cost Vs. similar models from competitors.
5. Build in 2 pcs H class filters rotate filter cleaning, every 25S is a cleaning cycle with each filter self cleaning 4S.

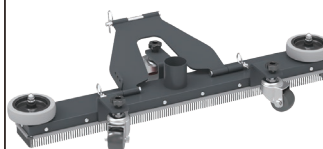
Model	Unit	DC3600
Voltage		230V 50/60Hz
Power	kw	3.6kw
	HP	5.4
Current	Amp	14.4
Water lift	mbar	240
	inch	100
Airflow (max)	cfm	354
	m³/h	600
Filter type		HEPA filter "TORAY" polyester
Filter area (cm²)		30000
Filter capacity(H11)		0.3um > 99.9%
Filter cleaning		Innovated auto clean system
Tank Volume(Gal)		20
Dimension	inch	24X28X53
	mm	610x710x1350
Weight	lbs	132
	kg	60

### Standard accessories

#### D50 tools kit



### Optional accessory



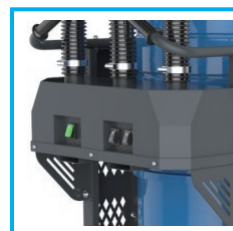
Innovated Auto Clean System



2 pcs H11 filters rotate to function filter cleaning



8" heavy duty non marking rear wheel



Individual switches control the 3 motors separately

# TS1000

## Single phase 1 motor HEPA dust extractor

TS1000 is equipped with a conical pre filter and one H13 HEPA filter. The main filter with 1.7 m<sup>2</sup> filter surface, each of the HEPA filter is independently tested and certified. TS1000 can separate the fine dust with efficiency > 99.99% @ 0.3µm, ensuring your work space is a clean and safe environment. TS1000 is recommended for small grinders and hand held power tools.



### Main features:

1. OSHA compliant H13 HEPA filter tested and certified with EN1822-1 and IEST RP CC001.6
2. "No marking type" rear wheels and lockable front caster.
3. Efficient jet pulse filter cleaning.
4. Continuous bagging system ensures quick and dust-free bag changes
5. Smart and portable design, transporting is like a breeze.

Model	TS1000
Power (kw)	1.2kw
Voltage	240V 50/60Hz
Amps	4.8
Airflow (m <sup>3</sup> /h)	200
Vacuum (mBar)	240
Pre-filter	1.7m <sup>2</sup> >99.5% @ 1.0µm
Hepa filter(H13)	1.2m <sup>2</sup> >99.99% @ 0.3µm
Filter cleaning	Jet pulse filter cleaning
Dimension (mm)	420X680X1100
Weight (kg)	30
Collection	Continuous drop-down bag

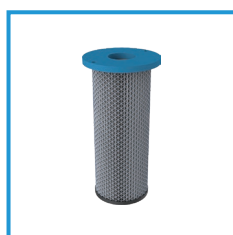
Standard accessory	
	
D38 brush	D38 L wand
	
D38 EVA hose, 5.0m	
	
D38 soft hose cuff	D38 solid hose cuff



Jet pulse filter cleaning



Pre-filter (F8)



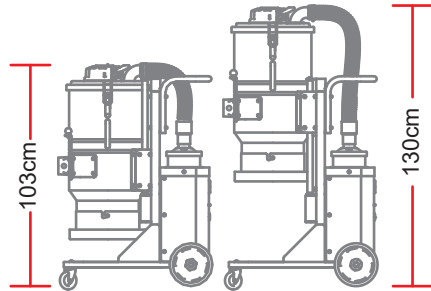
Hepa filter(H13)



# TS2000

## Single phase 2 motors HEPA dust extractor

TS2000 is a two engine HEPA dust extractor .It is equipped with a main filter as the first and two H13 filter as the final. Each HEPA filter is individually tested and certified to have a minimum efficiency of 99.99% at 0.3 microns. which meets the new silica requirements. This professional dust extractor is excellent for building, grinding, plaster and concrete dust.



### Main features:

1. OSHA compliant H13 HEPA filter tested and certified with EN1822-1 and IEST RP CC001.6
2. Unique jet pulse filter cleaning system, efficiently purges the pre-filter without opening the vacuum to maintain a smooth airflow, and to avoid creating a second dust hazard
3. Both continuous bagging system for effective dust storage and a regular plastic bag system are compatible.
4. The height of the vacuum can be lowered to 103cm, use little space as possible when transporting.(Optional)
5. An hour counter and vacuum meter for filter control are standard

Model	TS2000
Power (kw)	2.4kw
Voltage	240V 50/60Hz
Amps	9.6
Airflow (m <sup>3</sup> /h)	400
Vacuum (mBar)	240
Pre-filter	3.0m <sup>2</sup> >99.5%@1.0um
Hepa filter(H13)	2.4m <sup>2</sup> >99.99%@0.3um
Filter cleaning	Jet pulse filter cleaning
Dimension (mm)	570X710X1300
Weight (kg)	48
Collection	Continuous drop-down bag

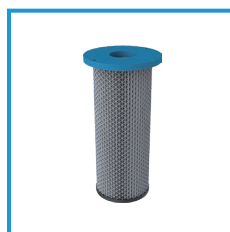
Standard accessory	
	
D50 floor brush	D50 S wand, aluminum
	
D70/50 reducer	D50 EVA hose ,7.5m
	
D50 hose cuff, 2-pc	



Jet pulse filter cleaning



Pre-filter (F8)



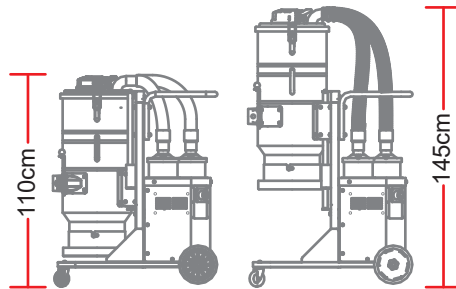
Hepa filter(H13)



# TS3000

## Single phase 3 motors HEPA dust extractor

TS3000 is a HEPA concrete dust extractor . With 3 large Ametek motors, TS3000 has plenty power to be connected to any mid or larger size grinders ,scarifiers, shot blasters to extract freshly cut, friable concrete dust. Certified HEPA filtration to 99.99% @ 0.3 microns to guarantee that the vacuum exhaust is absolutely dust-free. TS3000 is supplied with a complete tool kit, including hose, wand and floor tools.



### Main features:

1. OSHA compliant H13 HEPA filter tested and certified with EN1822-1 and IEST RP CC001.6
2. Unique jet pulse filter cleaning technology ensures efficient and clean filtration.
3. Welded frame/platform provide sturdy support in tough jobsite.
4. The 22 meters long plastic bag can be separated to approximately 40 individually sealed bags for fast, safe handling and disposal of dust.
5. Compact vertical unit is easy to maneuver and transport
6. The height of the vacuum can be lowered to 110cm, use little space as possible when transporting. (Optional)

Model	TS3000
Power (kw)	3.6kw
Voltage	240V 50/60Hz
Amps	14.4
Airflow (m <sup>3</sup> /h)	600
Vacuum (mBar)	240
Pre-filter	4.5m <sup>2</sup> >99.5%@1.0um
Hepa filter(H13)	3.6m <sup>2</sup> >99.99%@0.3um
Filter cleaning	Jet pulse filter cleaning
Dimension (mm)	630X840X1470
Weight (kg)	65
Collection	Continuous drop-down bag

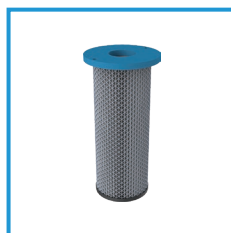
Standard accessory	
	
D50 floor brush	D50 S wand, aluminum
	
D70/50 reducer	D70/63 reducer
	
D50 hose cuff, 2-pc	D63 PU hose with HPVC spiral 10m
	
D50 EVA hose 7.5m	



Jet pulse filter cleaning



Pre-filter (F8)



Hepa filter(H13)

# B1000



## Main features:

1. Built in small size and stackable, makes it easy to move and storage.
2. Installed with a prefilter and H13 certified HEPA filter, the operators can be certain the entire room is benefiting from fresh air.
3. Easy to clean HEPA filter - The HEPA filter is protected by a metal mesh which makes it easy to vacuum it without damaging it.

## Air Scrubber

Model	B1000
Voltage	1 phase, 230V
Power (kw)	230W
Current	1A
Airflow(max)	1000m <sup>3</sup> /h
Primary filter	Disposable Polyester Media
H13 filter area	3.5m <sup>2</sup>
Noise level 2 speed	58/65 dB(A)
Dimension	460*360*460mm
Weight	19kgs

B1000 is a portable HEPA air scrubber with variable speed control and max airflow 1000m<sup>3</sup>/h. It equipped with a high efficiency 2-stage filtration system, the primary is a coarse filter, secondary with a large size professional HEPA 13 filter, which is tested and certified with efficiency of 99.99%@0.3 microns. B1000 has double warning lights, the red light warns filter broken, the orange light indicates filter clog. This machine is lightweight and the cabinet is made of rotomolded plastic for maximum durability. It can be used as an air cleaner and a negative air machine both.



Pre filter



H13 filter



Indicator light

# B2000



## Main features:

1. Equipped an extra socket.
2. Non-Marking, Puncture-Free lockable wheels.
3. Fitted with an air outlet connector with 254 mm diameter for connecting the evacuation hose.

## Air Scrubber

B2000 is a powerful and reliable air scrubber to handle tough air cleaning jobs in construction site. The max airflow is 2000m<sup>3</sup>/h, and can be run at two speeds. The primary filter will vacuum the big materials before it comes to the HEPA filter. The bigger and wider H13 filter is tested and certified with efficiency >99.99% @ 0.3 microns, to create a super clean air. A red indicator light warns when filters are clogged, an orange indicator light warns when filters are broken or leaked. Thanks to the compact and light design, the machine is easy to move and portable in transportation.

Model	B2000
Voltage	1 phase, 230V
Power	610W
Current	2.1A
Airflow(max)	2000m <sup>3</sup> /h
Pre filter area	0.64m <sup>2</sup>
H13 filter area	10.5m <sup>2</sup>
Noise level 2 speed	68 dB(A)
Dimension	710*500*850mm
Weight	52kgs



Pre filter



H13 filter



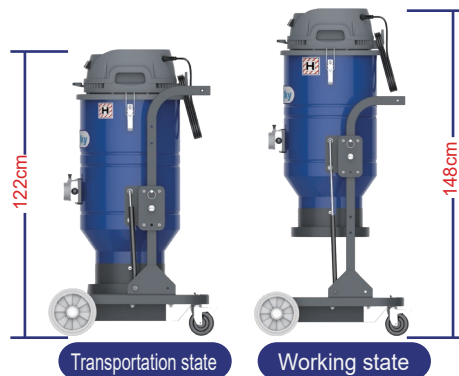
Indicator light



# T3 Series

## Single phase continuous bag dust extractor

Standard imported polyester coated HEPA filter, applies to continuous working condition, small size and large amount dust, specially applies to the floor grinding and polishing industry. Adjustable height, handling and transporting easily.



### Main features:

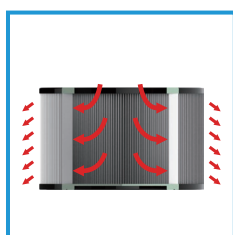
1. Three Ametek motors, for controlling the on/off independently.
2. Continuous drop-down bagging system, easy and fast loading/unloading.
3. Imported polyester fiber PTFE coated HEPA filter, low pressure loss, high filter efficiency.

Model	T302	T303
Voltage	240V 50/60Hz	
Power (kw)	3.6kw	
Vacuum (mBar)	240	
Airflow (m <sup>3</sup> /h)	600	
Noise (dbA)	80	
Filter type	HEPA filter "TORAY" polyester	
Filter area (cm <sup>2</sup> )	30000	
Filter capacity (H11)	0.3um > 99.9%	
Filter cleaning	Jet pulse filter cleaning	Semi automatic cleaning
Dimension (mm)	660X675X1220	660X675X1220
Weight (kg)	50	50

Standard accessory	
	
D50 floor brush	D50 S wand, aluminum
	
D70/50 reducer	D50 EVA hose, 7.5m
	
D50 hose cuff, 2-pc	



User friendly design convenient for removing the motor head.



Jet pulse filter cleaning



D70 aluminum die caster inlet, compatible for D50/D40 tools.

# T5 Series

## Single phase double barrel industrial vacuum

2 stage filtering, imported polyester fiber PTFE coated HEPA filter, applies to continuous working condition, small size and large amount dust, specially applies to the floor grinding and polishing industry.



### Main features:

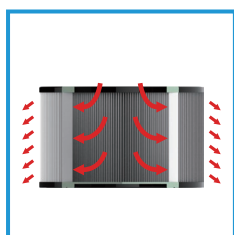
1. Three Ametek motors, for controlling the on/off independently.
2. Continuous drop-down bagging system, easy and fast loading/unloading.
3. 2 stage filtering, pre-filter is cyclone separator, Filtering more than 98% dust , make fewer dust to enter in vacuum cleaner, prolong the vacuums working time , to protect the filters in vacuum and extend the life time.
4. Imported polyester fiber PTFE coated HEPA filter, low pressure loss, high filter efficiency .

Model	T502	T503
Voltage	240V 50/60Hz	
Power (kw)	3.6kw	
Vacuum (mBar)	240	
Airflow (m <sup>3</sup> /h)	600	
Noise (dbA)	80	
Filter type	HEPA filter "TORAY" polyester	
Filter area (cm <sup>2</sup> )	30000	
Filter capacity (H11)	0.3um > 99.9%	
Filter cleaning	Jet pulse filter cleaning	Semi automatic cleaning
Dimension (mm)	650X1030X1460	650X1030X1460
Weight (kg)	80	83

Standard accessory	
	
D50 floor brush	D50 S wand, aluminum
	
D70/50 reducer	D50 EVA hose ,7.5m
	
D50 hose cuff, 2-pc	



User friendly design convenient for removing the motor head.



Jet pulse filter cleaning



D70 aluminum die caster inlet, compatible for D50/D40 tools.



# T0

## T0 Pre separator

When large amount of dust produced during the grinding, it is advisable to use a pre separator. The special cyclone system captures >90% of the material before vacuuming, greatly improve the filter efficiency and protect your dust extractor from clogging easily. T0 can be used in conjunction with all common industrial vacuums and dust extractors .

Model	T01
Collection	Continuous drop-down bag
Dimension (mm)	660X710X1430
Weight (kg)	35



Height adjustment  
1160-1430



### Main features:

- 1.More efficient work performance without interrupted often to clean the filter.
- 2.Continuous bagging system to collect the dust easily.
- 3.Very low cost maintenance

# X Series

## Cyclone separator

Can work with different vacuum cleaners  
Filtering >90% dust , make fewer  
dust to enter in vacuum cleaner,lengthen  
the vacuums working time , to protect the  
filters in vacuum and extend the life time.

Model	X60	X90
Tank volume (L)	60 L	90 L
Dimension (mm)	450X450X870	450X450X1030
Weight (kg)	16	17



# T05

## New separator enable the operator to change bags while the vacuum is working

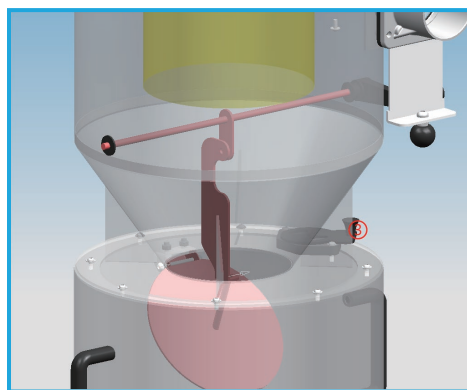
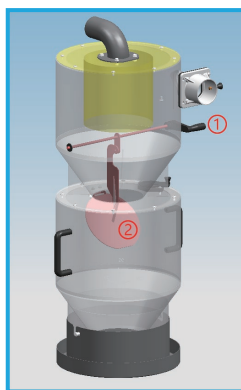
A vacuum cleaner pre separator is a component in some vacuum cleaning systems that separates larger debris and particulate matter from the air stream before it reaches the main collection container or filter. The pre separator acts as a pre-filter, trapping dirt, dust, and other larger particles before they can clog the vacuum's main filter. This helps to prolong the life of the main filter and ensure that the vacuum continues to operate effectively. By using the most other regular separator, the operator have to turn off the vacuum to let the dust drop down into the bag of the separator when changing bags. While the T05 dust separator build a smart design of the pressure relief valve, which enables any dust extractor to continuously operate with limited downtime, improve the working efficiency. T05 can be lowered to 115cm when in transportation.



### Main features:

1. The drop-down bag system, ensure a safe and clean dust disposal.
2. By close and open the pressure relief valve, the operator can change the bags without turn off the vacuum. Ensure a continuous working.
3. Height can be lowerd to 115mm, easy for transportation.

Model	T05
Collection	Continuous drop-down bag
Dimension (mm)	720X580X1500
Weight (kg)	48



In normal working status, the flap ② is opening, the dust will drop down to to the barrel below.

When changing bags, turning the handle ① to "Bag replacing" position, close the flap ②. Then open the pressure relief valve ③, the dust in the barrel will drop down into the bags. Replace a new bag, vacuum keeps working.

After the bag replacing finished, turn the handle to the "Vacuum working" position, the flap in the barrle will open. Close the pressure reflie valve③, the vacumm keeps working.

## Wet vacuum for slurry







D3 is a wet and dry single phase industrial vacuum, which can deal with liquid and dust the same time. The jet pulse filter cleaning is very effective for fine dust, the liquid level switch design will protect the motor when water is full. D3 is your ideal choice for wet grinding and polishing.



### Main features:

1. Wet and dry, with a 2.3ft width front-mount squeegee, especially designed for slurry.
2. Strong frame and heavy duty casters more durable in tough site.
3. 24Gal overturning tank save labour and time.
4. Effective jet pulse filter cleaning for fine dust.
5. With a liquid level switch, the vacuum will stop automatically when the water is full. Protect the motor from burning-out.

Model	Unit	D3280	D3180
Voltage		240V 50/60Hz	120V 50/60Hz
Power	kw	3.6kw	2.4kw
Current	Amp	14.4	18
Vacuum	mBar	240	200
Airflow (max)	m <sup>3</sup> /h	600	485
Dimension	mm	735X910X980	
Weight	kg	40	
Tank volume	L	92	
Filter type		HEPA filter "TORAY" polyester	
Filter area	cm <sup>2</sup>	5000	
Filter capacity	H11	0.3um > 99.9%	
Filter cleaning		Jet pulse filter cleaning	

Standard accessory		
		
D38 brush	D38 L wand	D38 EVA hose
		
D38 hose cuff	D38 solid hose cuff	
Optional accessory		
Front brush		
		



Jet pulse filter cleaning



Overturning tank



Strong frame

# S3 Series

## Single phase wet & dry vacuum

S3 series industrial vacuum cleaners are mainly used for non-continuous cleaning of manufacturing areas or for overhead cleaning. Featured as compact and flexible, they are easy to move. There are no impossible applications for the S3, from the laboratory, workshop, mechanical engineering to the concrete industry. You can choose this model for dry material only or for both wet and dry applications.



PTFE coated HEPA filter

### Main features:

1. Three Ametek motors, for controlling the on/off independently.
2. Detachable barrel, makes the dust dump work so easy.
3. Large filter surface with integrated filter cleaning system
4. Multi purposes flexibility, suitable for wet, dry, dust applications.



Model	S302
Voltage	240V 50/60Hz
Power (kw)	3.6kw
Vacuum (mBar)	240
Airflow (m <sup>3</sup> /h)	600
Noise (dbA)	80
Tank volume (L)	60
Filter type	HEPA filter "TORAY" polyester
Filter area (cm <sup>2</sup> )	30000
Filter capacity(H11)	0.3um > 99.9%
Filter cleaning	Jet pulse filter cleaning
Dimension (mm)	610X670X1325
Weight (kg)	55

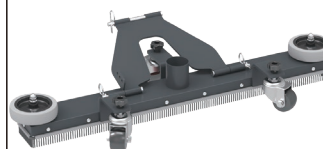
### Standard accessory

D50 tools kit

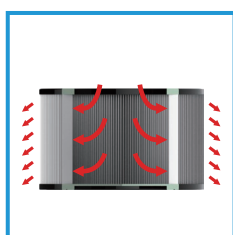


### Optional accessory

Front brush



User friendly design convenient for removing the motor head.



Jet pulse filter cleaning



D70 aluminum die caster inlet, compatible for D50/D40 tools.



Detachable tank





D38 Tool kit

- ① D38 crevice tool
- ② D38 EVA hose 2.5m
- ③ D38 solid hose cuff
- ④ D38 soft hose cuff
- ⑤ D38 S wand 2-pc
- ⑥ D38 round brush
- ⑦ D38 squeegee
- ⑧ D38 brush



D50 Tool kit

- ① D50 floor brush
- ② D50 S wand, aluminum
- ③ D70/50 reducer
- ④ D50 round brush
- ⑤ D50 EVA hose ,3m
- ⑥ D50 crevice tool, aluminum
- ⑦ D50 hose cuff, 2-pc



D70/50 reducer



D70/63 reducer



D70/75 reducer



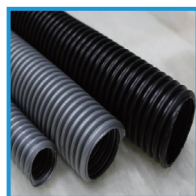
D70 connector



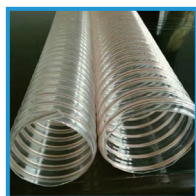
D50 connector



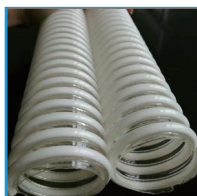
D70/50  
dispenser(2 outlets)



D50/D40  
EVA hose



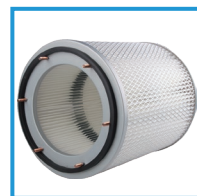
D75  
PU hose with steel spiral



D50/D63/D70  
PU hose with HPVC spiral



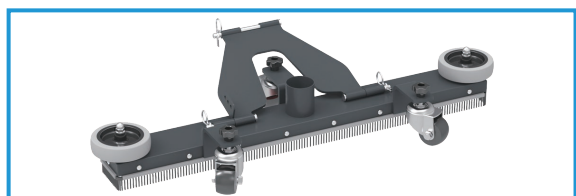
HEPA filter  
for automatic jet pulse  
filter cleaning vacuum



HEPA filter  
for automatic self  
cleaning vacuum



HEPA filter  
for jet pulse filter  
cleaning vacuum



D50 front brush W/D, working width 700 mm



continuous folding bag



D50 rubber crevice tool



12- pocket filter bag





## **Bersi Industrial Equipment Co.,Ltd**

Address: No.2002, East Taihu Road,Wuzhong District,  
Suzhou, China

Phone No. :+86 512 66895534

Website: [www.bersivac.com](http://www.bersivac.com)

E-Mail: [info@bersivac.com](mailto:info@bersivac.com)